

INTER-COUNTY ENERGY



www.intercountyenergy.net

SEPTEMBER 2021

Honor Flight canceled once again due to virus concerns

After this month, Inter-County Energy and other Kentucky Touchstone Energy Cooperatives were preparing to sponsor veterans from across the state on a trip to Washington, D.C., as part of the annual Honor Flight program. However, due to developments and concerns with the Delta variant of COVID-19, the Honor Flight Kentucky board made the decision to cancel this fall's flight.

We still wanted to highlight and announce the two veterans selected to represent Inter-County Energy.

Mr. Louis Walker of Boyle County and Mr. William Tungate of Marion County were selected to join about 70 other Kentucky veterans from World War II, the Korean War and the Vietnam War for the one-day tour of memorials dedicated to their service and sacrifices.

Walker, an 85-year-old Vietnam War veteran, and Tungate, also an 85-year-old Vietnam War veteran, would have represented Inter-County Energy on the trip, sponsored by Kentucky's Touchstone Energy Cooperatives.

This was to be the 10th year that the co-ops have sponsored an Honor Flight. The flights for both 2020 and 2021 unfortunately had to be canceled due to safety concerns due to the COVID-19 virus.



TIM WEBB



Though this year's flight did not occur as we all had hoped, we still salute our veterans and honor their service to this country. Thank you, vets, and

we look forward to making the 2022 Honor Flight the best that it can be.



A Touchstone Energy Cooperative 

Do you know of a veteran who would like to travel to D.C. as part of future Honor Flight programs? Have them sign up today at HonorFlightKY.org!

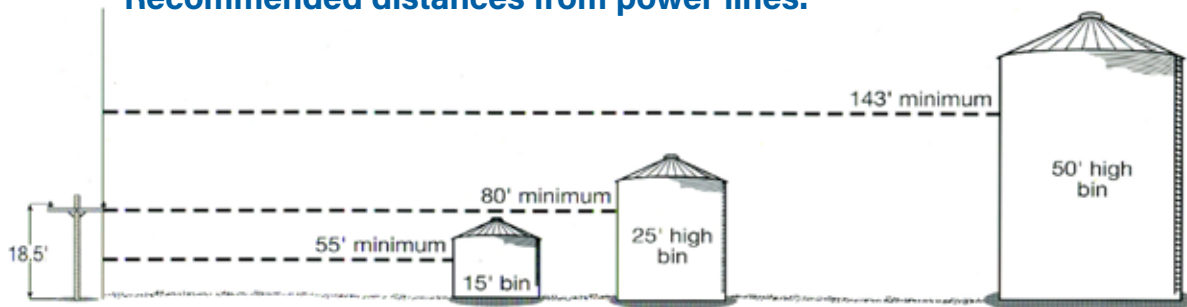
If building grain storage, call us first

Constructing a grain bin too closely to an electric power line is not only hazardous, but it's a violation of the National Electrical Safety Code (NESC). This regulation lists specific minimum distances that must be maintained (both horizontal and vertical clearances) between the bin and any utility-owned overhead lines. A bin constructed too closely to a power line may need to be moved, or the power

line must be rerouted. Correcting a code violation is expensive for the property owner and the power supplier.

The clearances mandated by the NESC applies to bins that were constructed or expanded after August 1989. We encourage anyone who thinks they have a violation, or is planning to build a bin, to contact our Engineering Department at (859) 236-4561 or (888) 266-7322 toll-free.

Recommended distances from power lines.



Required minimum distances between bin and power line.

Your Safety Matters

Be alert to electric hazards during fall harvest

Farming accidents can happen without a moment's notice, but having knowledge and awareness about potential electric hazards can prevent injuries, suffering and even death.

Before moving large farm machinery, always walk around the entire vehicle to look for guy wires, transformers and meter sockets, which can be extremely hazardous if there is contact.

If you are harvesting corn or soybeans, look up and keep the grain harvester spout at least 10 feet below and clear of overhead lines. When switching grain bins, lower the auger to prevent contact with power lines.

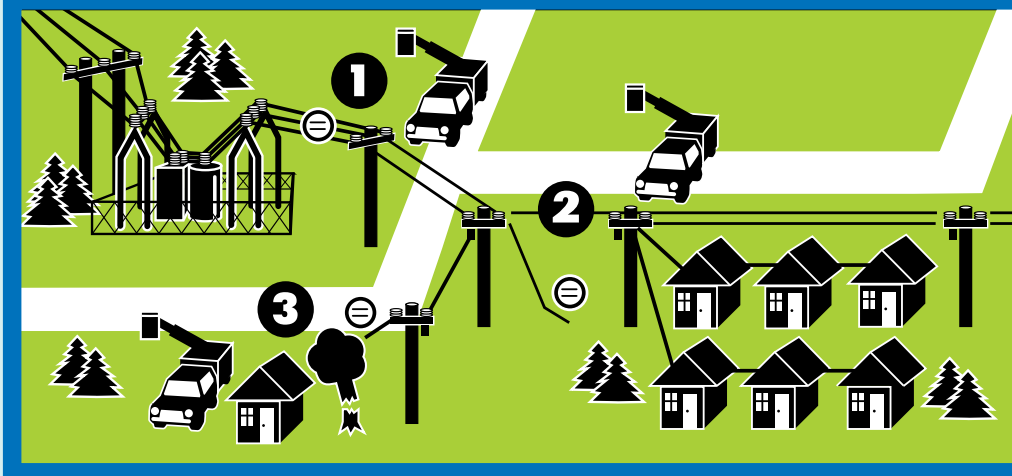
If you are moving and lifting irrigation pipes, have a spotter watch to make sure you stay away from overhead lines.

Inter-County Energy cares about your safety. Be alert. Be safe.



OTIKRIADOBEE STOCK

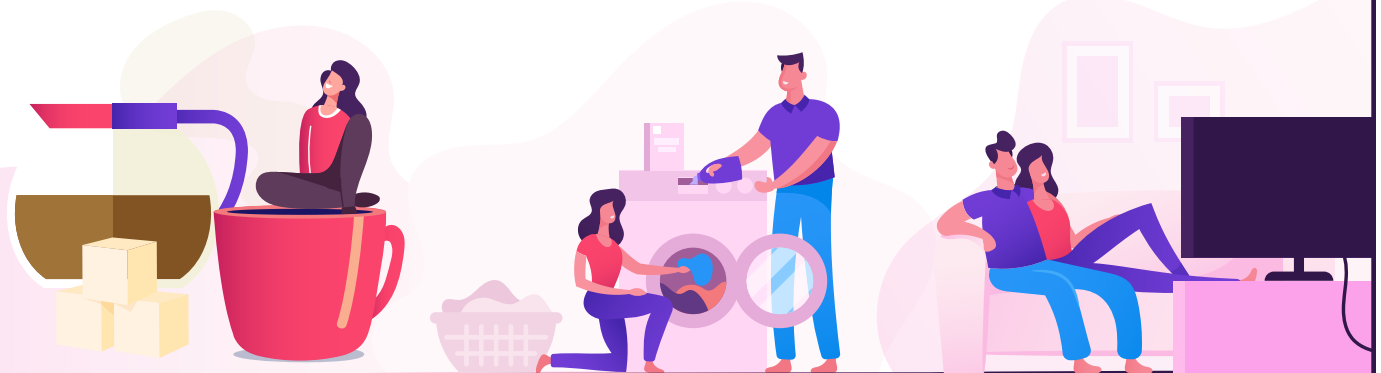
Getting You Back On Line



In any outage, the first priority is to get the greatest number of people back on line as quickly as possible. That's why Inter-County Energy follows a sequence of repairs that restores power to large groups of consumers before tackling smaller groups and individual consumers. This fictitious example details a typical repair sequence.

- 1** The main distribution line from the substation must be fixed before anyone can have power.
- 2** Next, repair crews fix the lines that bring power to the greatest number of people in a community.
- 3** After larger pockets of consumers are back on line, crews fix service lines to individual homes.

Electricity is a great value.



400 cups = \$1.00

28 loads = \$1.00

208 hrs. of TV = \$3.43

Value – it comes in many forms.
Ever think about what your
energy dollars power?

INTER COUNTY
ENERGY COOPERATIVE

A Touchstone Energy[®] Cooperative 

OUR MISSION

The mission of Inter-County Energy Cooperative is to provide long-term valued electrical energy and services to our members through a culture of safety, accountability, innovation, integrity, and commitment to community.

PRESIDENT/CEO

Jerry Carter

BOARD OF DIRECTORS

Chairman

Joseph H. Spalding (Marion)

Vice Chairman

Jason E. Todd (Lincoln)

Secretary-Treasurer

J. Kevin Preston (Garrard)

Directors

William H. Peyton (Casey)

W. Allen Goggin (Boyle)

Louis A. Kerrick (Mercer)

Attorney

James Hadden Dean

EDITOR

Morgan Janssen

24-HOUR EMERGENCY/OUTAGE REPORTING (866) 224-2235

For major outage updates and restoration efforts, listen to the following radio stations; WPBK 102.9, WHIR 105.1, WOKH 102.7, WDFB 88.1 or WLSK 100.9.

FOR INFORMATION AND INQUIRIES:

Toll-free: 1-888-266-7322

OFFICE HOURS: 7:30 AM - 4:30 PM

DANVILLE/BOYLE COUNTY
(859) 236-4561

LEBANON/DISTRICT OFFICE
(270) 692-3761

www.intercountyenergy.net

E-mail: mail@intercountyenergy.net

This institution is an equal opportunity provider and employer.

Follow us on social media:



Solar 101: Points to ponder before purchasing a solar system

Thinking about installing solar panels? If so, there are important things to consider before making a major investment.

To learn more, please check out our booklet, *Solar 101: What you need to know*, online at www.intercountyenergy.net.

If you want to support renewable


power, please consider the renewable energy programs offered by Inter-County Energy.

Our renewable programs are easy and affordable—and from a source you know and trust.

Learn more about them at www.cooperativesolar.com and www.envirowattsky.com.



RANDY BUCKNAM



Inter-County Energy will be closed September 6 in observance of Labor Day.

Please contact our 24-hour outage line, (866) 224-2235, in case of an emergency or outage.

MYIMAGINEADDBE STOCK