

INTER-COUNTY ENERGY



www.intercountyenergy.net

SEPTEMBER 2020



Welcome, new employee Brittany Mattingly

Inter-County Energy welcomes new employee Brittany Mattingly. Brittany's first day at Inter-County Energy was June 15. Brittany lives in Lebanon, and in her free time, she likes to camp and go to the lake with her family and friends. Welcome to the co-op family, Brittany.

Employee of the Month

Congratulations to Melvin Johnson for receiving Employee of the Month. Over the past few months our world has been faced with many uncertainties. Here at Inter-County Energy, Melvin has gone the extra mile to help employees feel safe at work as we continue to provide electric energy and services to our members. He has spent most of his workday sanitizing the office in effort to keep the risk of COVID-19 as low as possible for employees. In addition, he continues to keep supplies ordered and in stock that are needed for daily operations. Melvin is a great example of commitment to the cooperative.



A Touchstone Energy Cooperative 

Save energy this fall

While families spend more time at home, they use more electricity. Luckily, mild fall weather brings with it an opportunity to save energy without sacrificing comfort.

Here are some tips to help you save:

- Take advantage of the sun's warmth. Once you no longer need to run the air conditioner, open the curtains on your home's south-facing windows to let the daylight in. The natural heat will stave off the need to turn on the furnace for a while. Close the curtains at night so chilly air won't sneak into your home through exposed windows.

- Open windows on both sides of the home when it's warm enough. That will create a nice breeze indoors and help you air the house out.



- If you have drafty windows, fall is a good time to address the problem. Cover windowpanes with clear plastic film or hang insulating drapes.

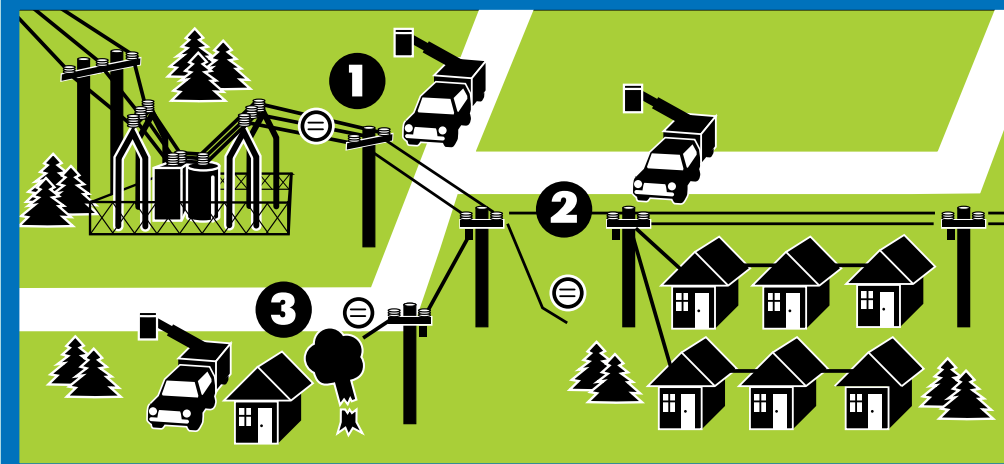
- Use caulk to seal around indoor holes in your exterior walls for electric lines, cables, plumbing pipes and phone wires. Do the same around

- windows and recessed light fixtures in ceilings.

- Keep the fireplace damper closed when you're not burning a fire.

- Keep a sweater handy. Sometimes it's just the solution to a chilly evening that comes too early in the season to run the heater.

Getting You Back On Line



In any outage, the first priority is to get the greatest number of people back on line as quickly as possible. That's why electric co-ops follow a sequence of repairs that restores power to large groups of consumers before tackling smaller groups and individual consumers. This fictitious example details a typical repair sequence.

- 1 The main distribution line from the substation must be fixed before anyone can have power.
- 2 Next, repair crews fix the lines that bring power to the greatest number of people in a community.
- 3 After larger pockets of consumers are back on line, crews fix service lines to individual homes.

Your Safety Matters

Be alert to electric hazards during fall harvest

Farming accidents can happen without a moment's notice, but having knowledge and awareness about potential electric hazards can prevent injuries, suffering and even death.

Before moving large farm machinery, always walk around the entire vehicle to look for guy wires, transformers and meter sockets, which can be extremely hazardous if there is contact.

If you are harvesting corn or soybeans, look up and keep the grain harvester spout at least 10 feet below and clear of overhead lines. When switching grain bins, lower the auger to prevent contact with power lines.

If you are moving and lifting irrigation pipes, have a spotter watch to make sure you stay away from overhead lines.

Inter-County Energy cares about your safety. Be alert. Be safe.



Inter-County Energy will be closed Monday, September 7, in honor of Labor Day. Please contact our 24-hour outage line in case of an emergency or outage by calling (800) 224-2235.

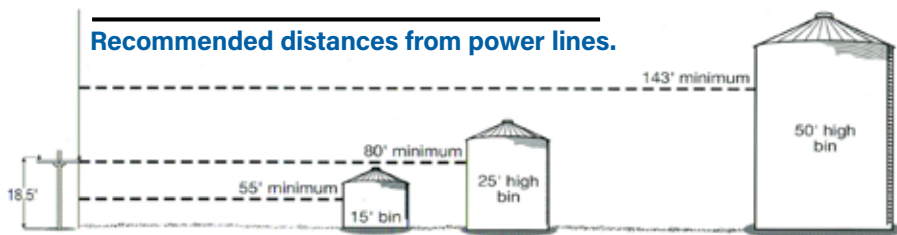
If you are building a grain bin, call us first

Constructing a grain bin too closely to an electric power line is not only hazardous, but it's a violation of the National Electrical Safety Code (NESC).

This regulation lists specific minimum distances that must be maintained (both horizontal and vertical clearances) between the bin and any utility-owned

overhead lines. A bin constructed too closely to a power line may need to be moved, or the power line must be rerouted. Correcting a code violation is expensive for the property owner and the power supplier.

The clearances mandated by the NESC applies to bins that were constructed or expanded after August 1989. We encourage anyone who thinks they have a violation, or is planning to build a bin, to contact our Engineering Department at (859) 236-4561 or (888) 266-7322 toll-free.



Required minimum distances between bin and power line.

the power of membership

Commitment to Community



HONOR FLIGHT KENTUCKY

As your local Touchstone Energy co-op, we are committed to making life better for those we serve. For 10 years, we've been humbled to sponsor local veterans for an Honor Flight. Veterans travel to Washington, D.C., free of charge, to see their memorials. While this year's flight was canceled due to COVID-19 concerns, we're committed to a flight for 2021. Thank you to all who've served and continue to serve our nation.



Kentucky's
Touchstone Energy
Cooperatives®

It's the power of human connections.



Make safety a priority at work and at home

OUR MISSION

The mission of Inter-County Energy Cooperative is to provide long-term valued electrical energy and services to our members through a culture of safety, accountability, innovation, integrity, and commitment to community.

PRESIDENT/CEO

Jerry Carter

BOARD OF DIRECTORS

Chairman

Joseph H. Spalding (Marion)

Vice Chairman

Jason E. Todd (Lincoln)

Secretary-Treasurer

J. Kevin Preston (Garrard)

Directors

William H. Peyton (Casey)

W. Allen Goggin (Boyle)

Louis A. Kerrick (Mercer)

Attorney

James Hadden Dean

EDITOR

Morgan Janssen

24-HOUR EMERGENCY/OUTAGE REPORTING (866) 224-2235

For major outage updates and restoration efforts, listen to the following radio stations; WPBK 102.9, WHIR 105.1, WOKH 102.7, WDFB 88.1 or WLSK 100.9.

FOR INFORMATION AND INQUIRIES:

Toll-free: 1-888-266-7322

OFFICE HOURS: 7:30 AM - 4:30 PM

DANVILLE/BOYLE COUNTY

(859) 236-4561

LEBANON/DISTRICT OFFICE

(270) 692-3761

www.intercountyenergy.net

E-mail: mail@intercountyenergy.net

This institution is an equal opportunity provider and employer.

Follow us on social media:



Safety culture is nothing new for Inter-County Energy Cooperative.

The worldwide emphasis on basic safety practices prompted by the coronavirus pandemic forced many people to change their routines and think differently about day-to-day schedules.

At Inter-County Energy, though pandemic restrictions were new for us, the focus on safety was a familiar and perfect fit for our safety culture.

Each day, our employees have both regular tasks and unique challenges depending on many factors.

For instance, before Inter-County Energy line technicians begin any job assigned on a given day, they first assess the staffing and equipment needs. The job briefing discusses the objective, location of the worksite, potential hazards, nearest emergency help and if anyone besides the co-op needs to be involved.

Everything about this process begins with making safety the priority and not taking anything for granted. It's a lesson we encourage Inter-County Energy employees to take home with them and one we encourage you to share with your family. Don't let complacency or routine replace the care and attention your life deserves. Each month, *Kentucky Living's* Safety Moment column (page 13) shares some useful advice you can apply in your own home.

If you have ever pulled into your driveway and can't remember your drive to get there, you know



Lineman Chase Gander. Photo: Josh Hale

it can happen. "Auto-pilot" mode can lead us to stop paying attention when we are completing the most ordinary tasks, like driving, cutting food, doing yard or farm work or riding a bike.

Inter-County Energy Cooperative is part of an effort with other electric cooperatives in Kentucky and across the country aimed at improving specific safety metrics with an intense focus on preventing serious accidents involving human contact with an energized power line or equipment.

We will learn many lessons from 2020, but if there is anything good that can come out of the pandemic, it is that we can all be more intentional about safety and not take any of the small and ordinary parts of our lives for granted.