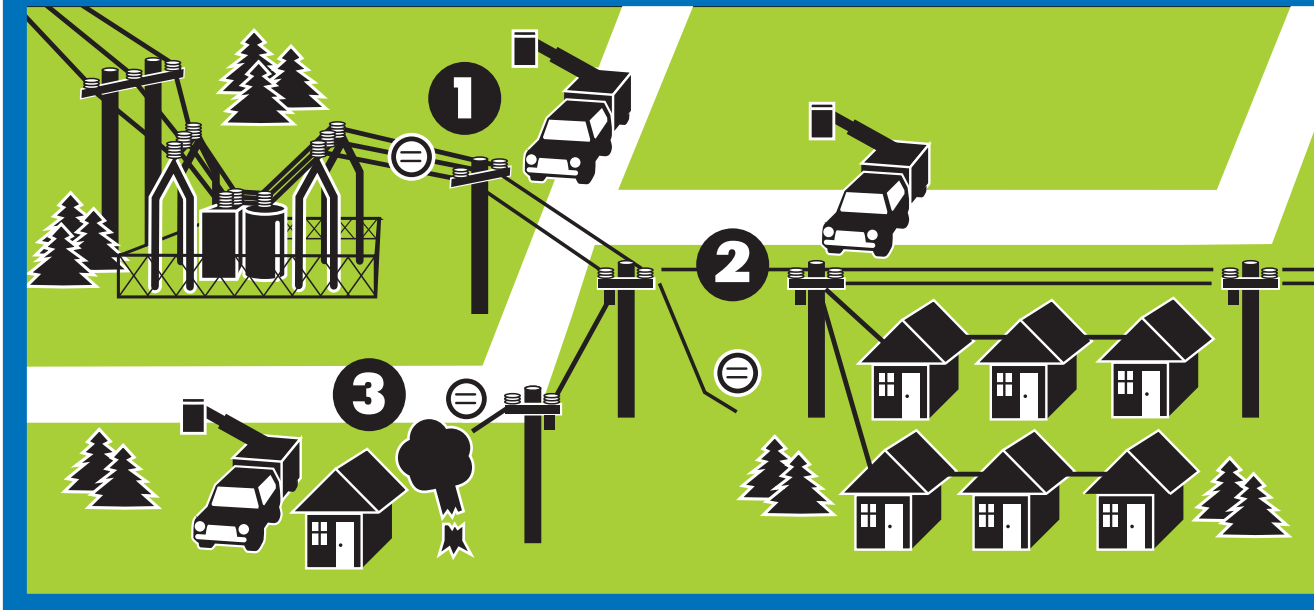


## Getting You Back On Line



In any outage, the first priority is to get the greatest number of people back on line as quickly as possible. That's why electric co-ops follow a sequence of repairs that restores power to large groups of consumers before tackling smaller groups and individual consumers. This fictitious example details a typical repair sequence.

- 1** The main distribution line from the substation must be fixed before anyone can have power.
- 2** Next, repair crews fix the lines that bring power to the greatest number of people in a community.
- 3** After larger pockets of consumers are back on line, crews fix service lines to individual homes.